

IRISO ELECTRONICS

13065 SERIES

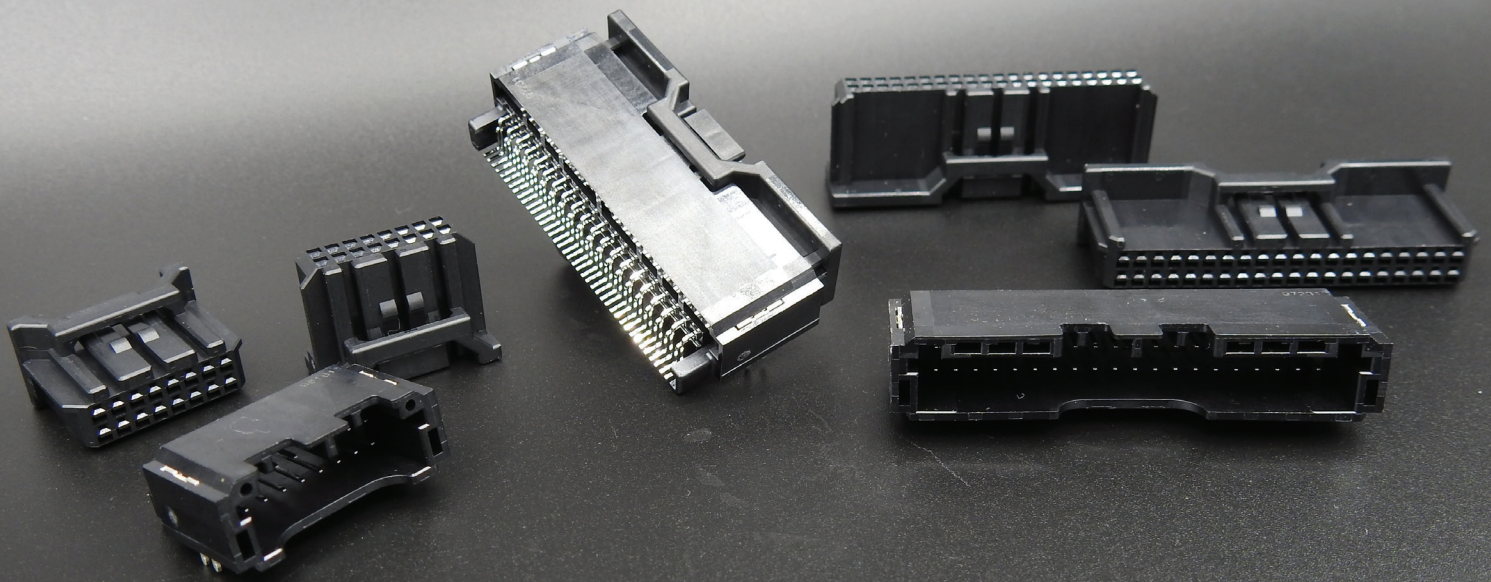
I/O CONNECTOR



Applications:

ADAS, Infotainment, Powertrain

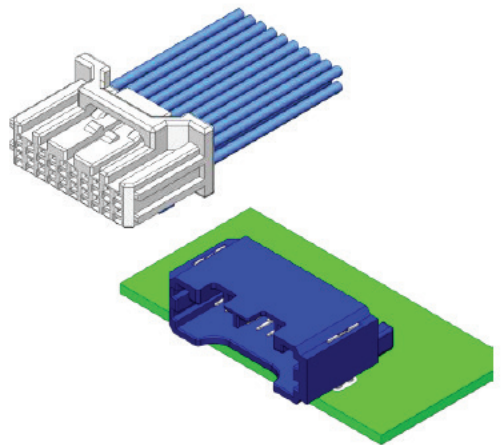




PRODUCT INFORMATION

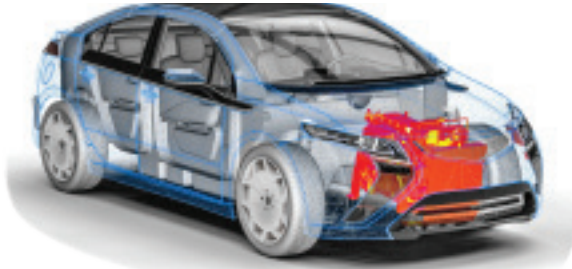
Introducing IRISO's non-waterproof, 2.0mm pitch 13065 Series wire-to-board connector for in-vehicle device interfaces. The connector uses 050 ultra-compact crimp terminals (tab size 0.5mm x 0.3mm) in a box structure. This gives the connector a low profile with high density and reduces the overall size. Three types of keying variations are also available.

The 13065 Series is designed for high temperatures reaching +125°C and has a two-row, right angle type with SMT (Surface Mount Technology) for automatic mounting.



PRODUCT FEATURES

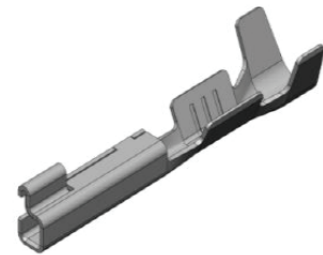
1: HIGH HEAT RESISTANCE



An increase in heat generation around the engine and increased technology found throughout the vehicle with high functionality means the connector products you choose must withstand intense heat. IRISO makes full use of the latest material and design methodologies to ensure the safety of our connectors even in the harshest temperature conditions.

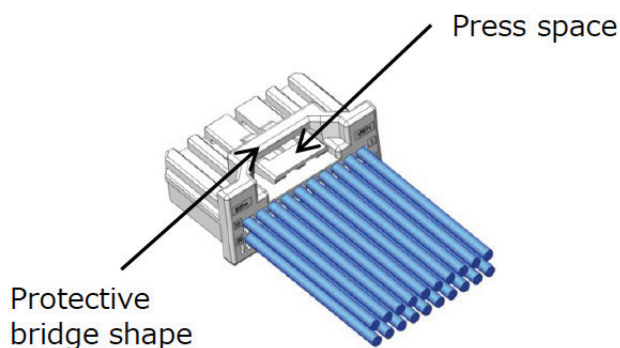
2: SPACE SAVING

Instead of using a traditional 0.64mm terminal, the smaller 0.5mm terminals in the 13065 Series mean a 59% smaller board area and 60% shorter in board-side connector height. What does that mean for your next project? By choosing the 13065 Series, you'll be able to save valuable space and reduce overall weight.



3: USEABILITY IMPROVEMENT

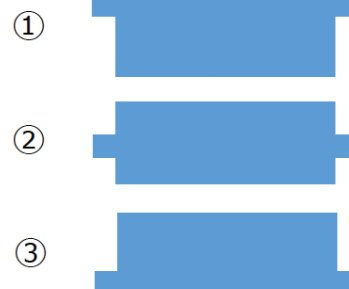
A bridge space, added around the top of the lock lever, makes it easier to hold the connector during insertion and removal. This prevents any deformation and entanglement that may occur when wire harnesses are bundled.



4: PIN COUNT VARIATION

Variations in pin count ranging from 8 to 40 poles are available for mounting on a wide variety of products. Wondering what would best suit your latest project? Our sales team is available to answer any questions you might have.

Keying Variation



COMMON APPLICATIONS

ADAS

INFOTAINMENT

POWERTRAIN

PRODUCT SPECS

IMSA-13065B-*-**Y90*
IMSA-13065S-*-**Y90*

SOCKET PLUG

Item	Specification	Unit
Pitch	2.0	mm
Pin Counts	8 ~ 40	Circuit
Connecting Type	Right Angle	-
Operating Temperature Range	-40 ~ +125	°C
Rated Current	3.0	A
Rated Voltage	50	V
Withstand Voltage	1000	V
Durability (Insertion/Withdrawl)	20	Times

Parts	Material	Plating
Housing	PPS	-
Contact	Copper Alloy	Tin
Metal Flange	Copper Alloy	Tin

Parts	Material	Plating
Housing	PBT	-
Retainer	PBT	-

IPS-13065T-01A-T

Component	Material	Plating
Receptacle Contact	Copper Alloy	Tin

*Specification is subject to change without prior notice in order to improve the performance of the product. Dimensions and specifications described herein are limited to major items. When applying the products, please confirm the details on the drawing and specification sheets which will be provided upon request.

ABOUT

IRISO ELECTRONICS



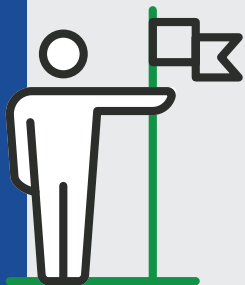
It started with a single pin...

IRISO has been contributing to the development of the electronics industry worldwide for over 50 years since its foundation as a comprehensive connector manufacturer in 1966. Our more than 3000 employees support customers worldwide on a wide range of innovative new products designed to meet the needs of our industry both today and tomorrow.



Connected with our customers...

Our customers are at the core of our business. Based on the concept of “market-in”, we develop and manufacture products that are closely linked to customer needs. We listen carefully to customer feedback, verify any issues that may exist in all processes from concept to the production line, and incorporate the feedback into the product design. We take a consultative approach to developing custom products in order to ensure a successful partnership.



As a bridge to the future...

With beginnings in the Car AV and electronics, IRISO has established itself as a leading company in the development of connectors for the automotive market. For more than fifty years we have continued to devote ourselves to developing the field of electronics. Over the years, we have significantly expanded the range of our automotive product development to include a wide range of connectors for ADAS, electric powertrain and infotainment applications of today and tomorrow.

LEARN MORE AT: IRISOCONNECTORS.COM

種類 POS	品番 No.	A	B	C
16	130435-2-18*	18	18.9	14
20	130435-2-20*	22	23.9	18
24	130435-2-24*	26	27.9	22
28	130435-2-28*	30	31.9	26
32	130435-2-32*	34	35.9	30
40	130435-2-40*	42	43.9	38



16A05 130655-2-16A



2090S 13065S-2-204



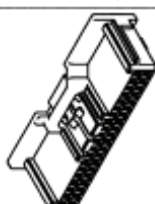
24PDS 13065S-2-24A



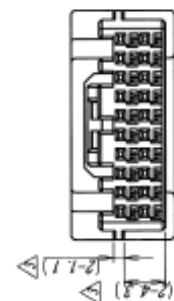
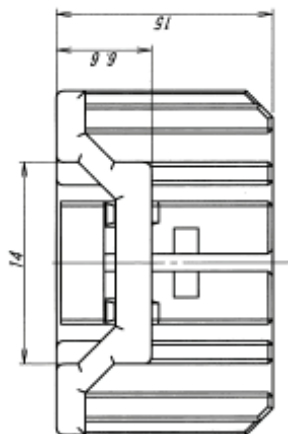
28905 130655-2-28A



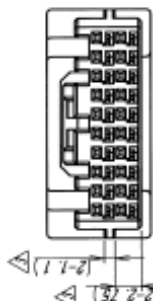
3290S 130655-2-32A



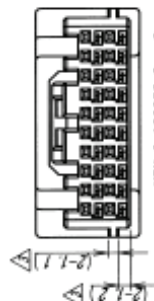
OPDS 130655-2-404



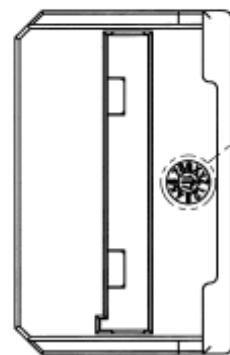
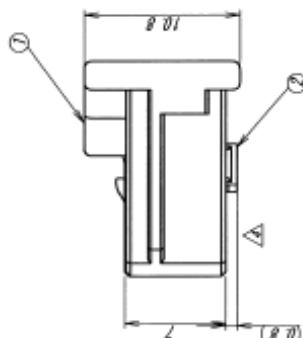
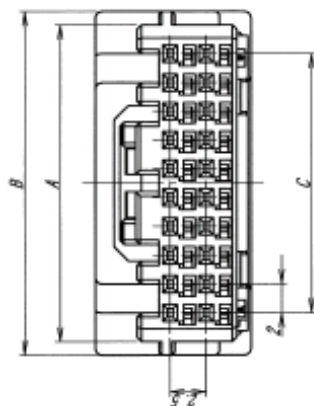
KEY-1 130655-2-#2A



REV-2 130655-2-#49



KEY-3 130655-2-#C



DETAIL D

: 1A~9A : 1~9
// JANUARY~SEPTEMBER : 1~9
: 10A~12A : K.V.Z.
OCTOBER~DECEMBER : K.V.Z.

NOTE:

1. 飯俵止時リテーナ-突起が「カウジン」の外側に出ていること。

(リテーナーが仮係止状態)
納品時、本係止状態になっている場合は、仮係止状態にして下さい。

1. THE RETENTION LATCH OF THE RETAINER MUST BE OUT SIDE OF SOCKET HOUSING WHEN PRE-ASSEMBLY. (RETAINER IS IN PRE-ASSEMBLED CONDITION) —
— WHEN THE RETAINER IS IN FINAL LOCK CONDITION AT THE SHIPPED TO CUSTOMER. IT MUST BE UNLOCKED TO PRE-ASSEMBLED CONDITION.

[illegible]

DO NOT SCALE DRAWING.
THIS DRAWING CONTAINS INFORMATION THAT IS PROPRIETARY TO TOYOTA AND SHOULD NOT BE USED WITHOUT WRITTEN PERMISSION. 本図面は、イソリジ電子工業（株）の所有する技術を含みます。のちの各社の許可なく複製を禁止する。

[illegible]

1. 仮停止時リターナー突起が(1)の右側に出ていること。
(リターナーが仮停止状態。)

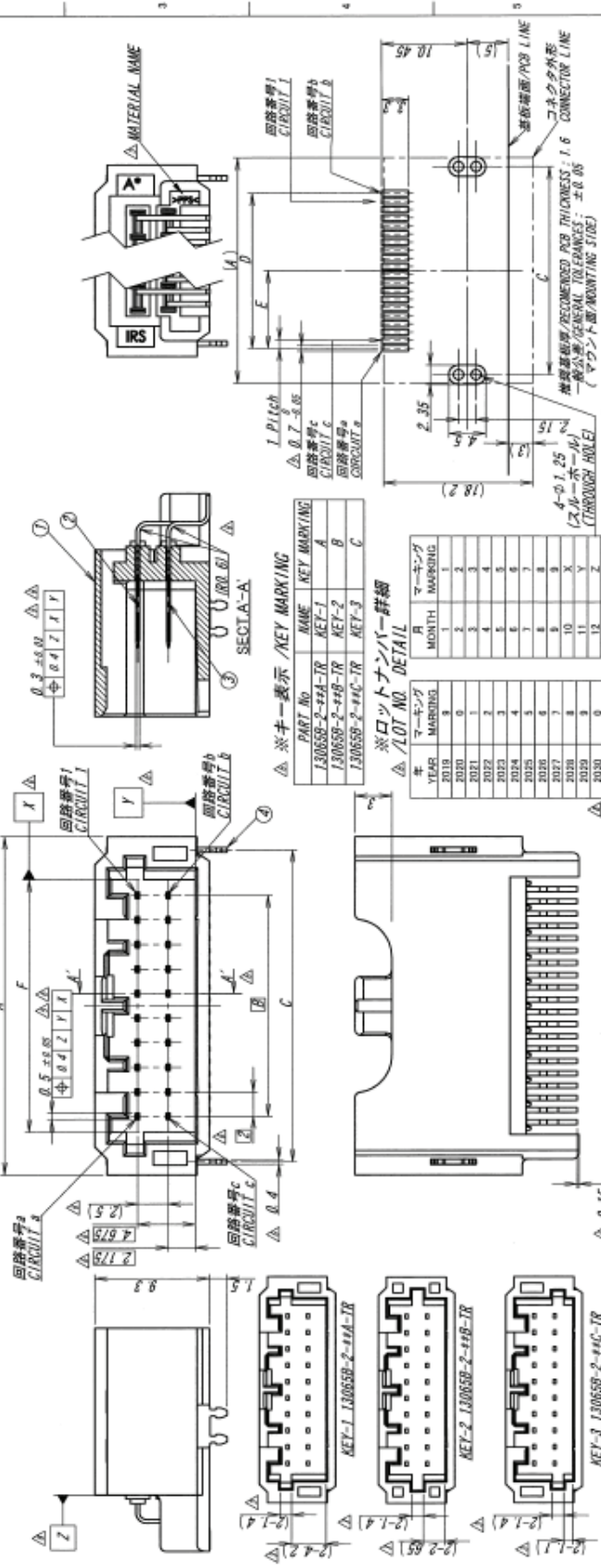
1. THE RETENTION LATCH OF THE RETAINER MUST BE OUT SIDE OF SOCKET HOUSING WHEN PRE-ASSEMBLY. (RETAINER IS IN PRE-ASSEMBLED CONDITION) —
WHEN THE RETAINER IS IN FINAL LOCK CONDITION AT THE SHIPPED TO CUSTOMER IT MUST BE UNLOCKED TO PRE-ASSEMBLED CONDITION.

[illegible]

DO NOT SCALE DRAWING.
INFORMATION THAT IS PROPRIETARY TO IRTSD AND SHOULD NOT BE USED WITHOUT WRITTEN PERMISSION. 本図面は、イリソ電子工業（株）の所有する情報を含め、その当社の許可なく複製を禁止する。

種類 POS	品番 No.	A	B	C	D	E	F	G	H
8	13065B-2-08-TR	15.6	6	13.45	7	3.5	8.6		
12	13065B-2-12-TR	19.8	10	17.45	11	5.5	12.6		
16	13065B-2-16-TR	23.6	14	21.45	15	7.5	16.6		
20	13065B-2-20-TR	27.6	18	25.45	19	9.5	20.6		
24	13065B-2-24-TR	31.6	22	29.45	23	11.5	24.6		
28	13065B-2-28-TR	35.6	26	33.45	27	13.5	28.6		
32	13065B-2-32-TR	39.6	30	37.45	31	15.5	32.6		
40	13065B-2-40-TR	47.8	38	45.45	39	19.5	40.6		

NOTE
1.コプラリテ/COPLANARITY 0.1mmMAX.



SCALE 寸法	1 mm	UNIT 単位	mm
IR	20/11/28	DES	J. Sakamoto
CHK	20/11/28	APP	K. Kobayashi
TITLE 名称 13065 シリーズ ピンヘッダー 13065 SERIES PIN HEADER			
SHEET 1 OF 2			
PARTS No 部品 IRISO ELECTRONICS CO., LTD IRISO 電子工業株式会社			
DWG No 図番 110-413065-216			
REV. 8			

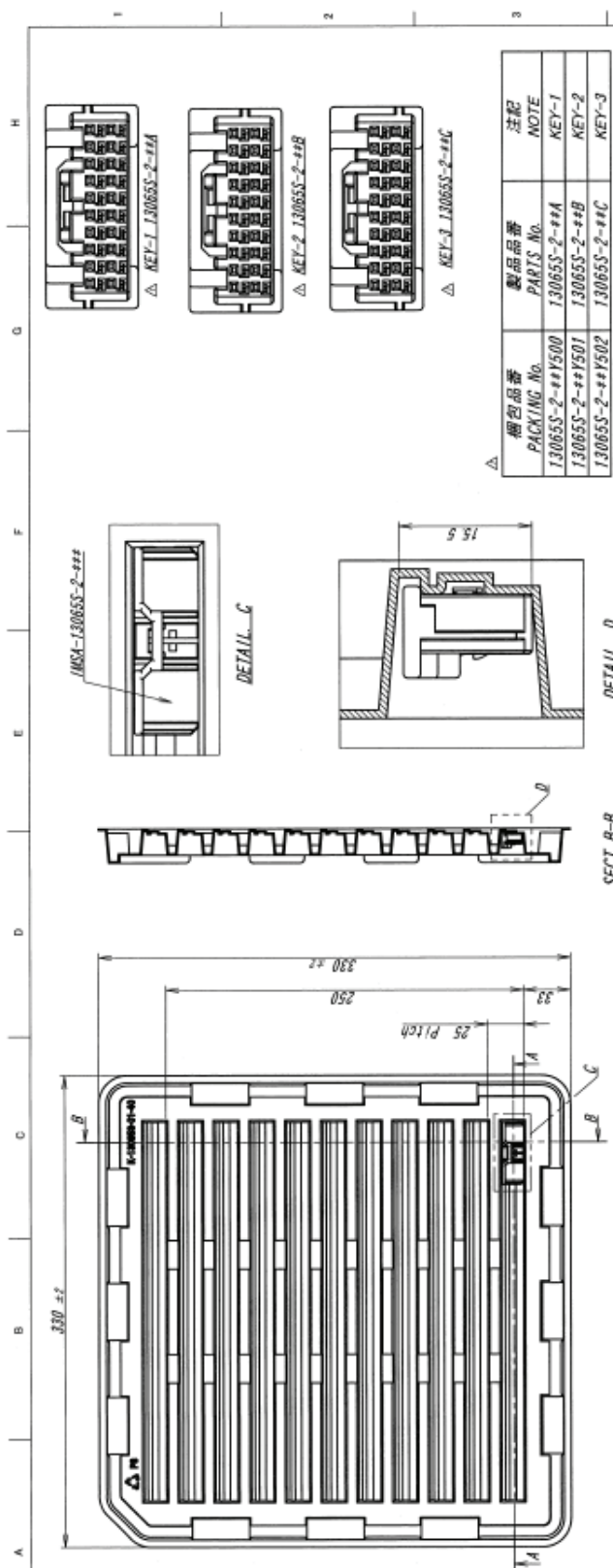
DO NOT SCALE DRAWING. THIS DRAWING CONTAINS INFORMATION THAT IS PROPRIETARY TO IRISO AND SHOULD NOT BE USED WITHOUT WRITTEN PERMISSION. 本図面は、イリス電子工業 (株) の所有する特許を含むもので当社の許可なく複製を禁止する。

 これは原本のコピーです。This document is a copy of the original

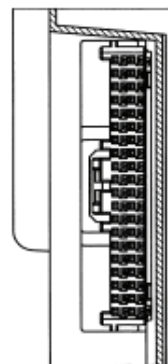
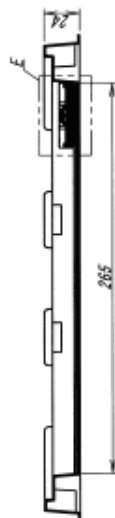
型番/Part No	個数/Pos	13065B-2-08* (A, B, C) -TR 8個/8Pos	13065B-2-12* (A, B, C) -TR 12個/12Pos	13065B-2-16* (A, B, C) -TR 16個/16Pos	13065B-2-20* (A, B, C) -TR 20個/20Pos	13065B-2-24* (A, B, C) -TR 24個/24Pos	13065B-2-28* (A, B, C) -TR 28個/28Pos	13065B-2-32* (A, B, C) -TR 32個/32Pos	13065B-2-40* (A, B, C) -TR 40個/40Pos	13065B-2-48* (A, B, C) -TR 48個/48Pos	13065B-2-56* (A, B, C) -TR 56個/56Pos
組合側 切り欠き形状 MATING SIDE 凹 SHAPE											
裏面側 肉抜き形状 BACK SIDE MAKE THINNER											
型番/Part No	個数/Pos	13065B-2-08* (A, B, C) -TR 8個/8Pos	13065B-2-12* (A, B, C) -TR 12個/12Pos	13065B-2-16* (A, B, C) -TR 16個/16Pos	13065B-2-20* (A, B, C) -TR 20個/20Pos	13065B-2-24* (A, B, C) -TR 24個/24Pos	13065B-2-28* (A, B, C) -TR 28個/28Pos	13065B-2-32* (A, B, C) -TR 32個/32Pos	13065B-2-40* (A, B, C) -TR 40個/40Pos	13065B-2-48* (A, B, C) -TR 48個/48Pos	13065B-2-56* (A, B, C) -TR 56個/56Pos
組合側 切り欠き形状 MATING SIDE 凹 SHAPE											
裏面側 肉抜き形状 BACK SIDE MAKE THINNER											

DO NOT SCALE DRAWING.
THIS DRAWING CONTAINS INFORMATION THAT IS PROPRIETARY TO INECO AND SHOULD NOT BE USED WITHOUT WRITTEN PERMISSION. 本図面は、イリソ電工工業（株）の所有する情報を含むもので当社の許可なく複製を禁ずる。

⚠ これは図本のコピーです。This document is a copy of the original

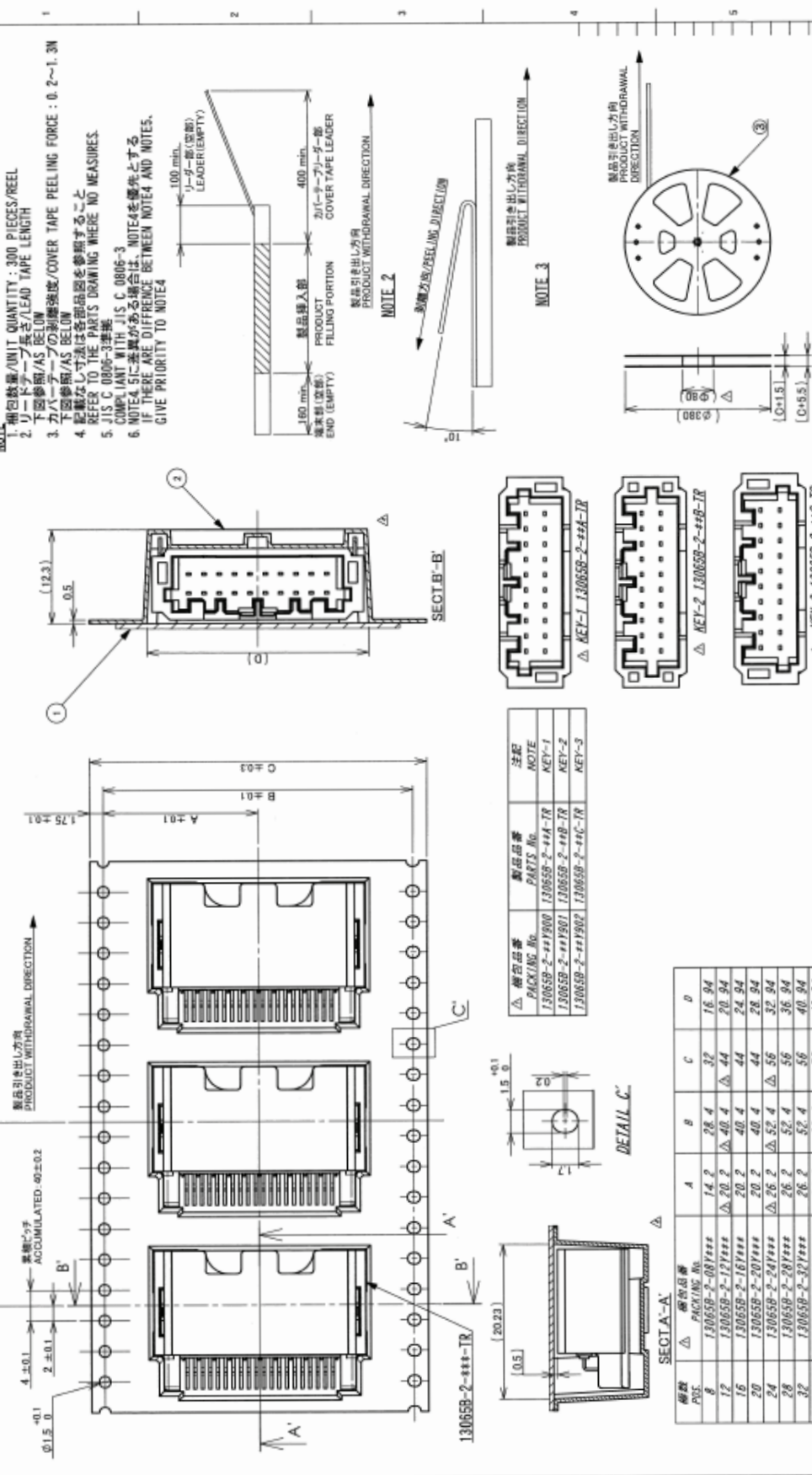


極數 CKT	Δ. 線包品番 PACKING No.	製品品番 PARTS No.	線包數量 Qty
8	130655-2-08Y50*	130655-2-08*	242 (12×11)
12	130655-2-12Y50*	130655-2-12*	176 (16×11)
16	130655-2-16Y50*	130655-2-16*	143 (13×11)
20	130655-2-20Y50*	130655-2-20*	121 (11×11)
24	130655-2-24Y50*	130655-2-24*	99 (9×11)
28	130655-2-28Y50*	130655-2-28*	88 (8×11)
32	130655-2-32Y50*	130655-2-32*	77 (7×11) Δ
40	130655-2-40Y50*	130655-2-40*	66 (6×11)

[illegible]

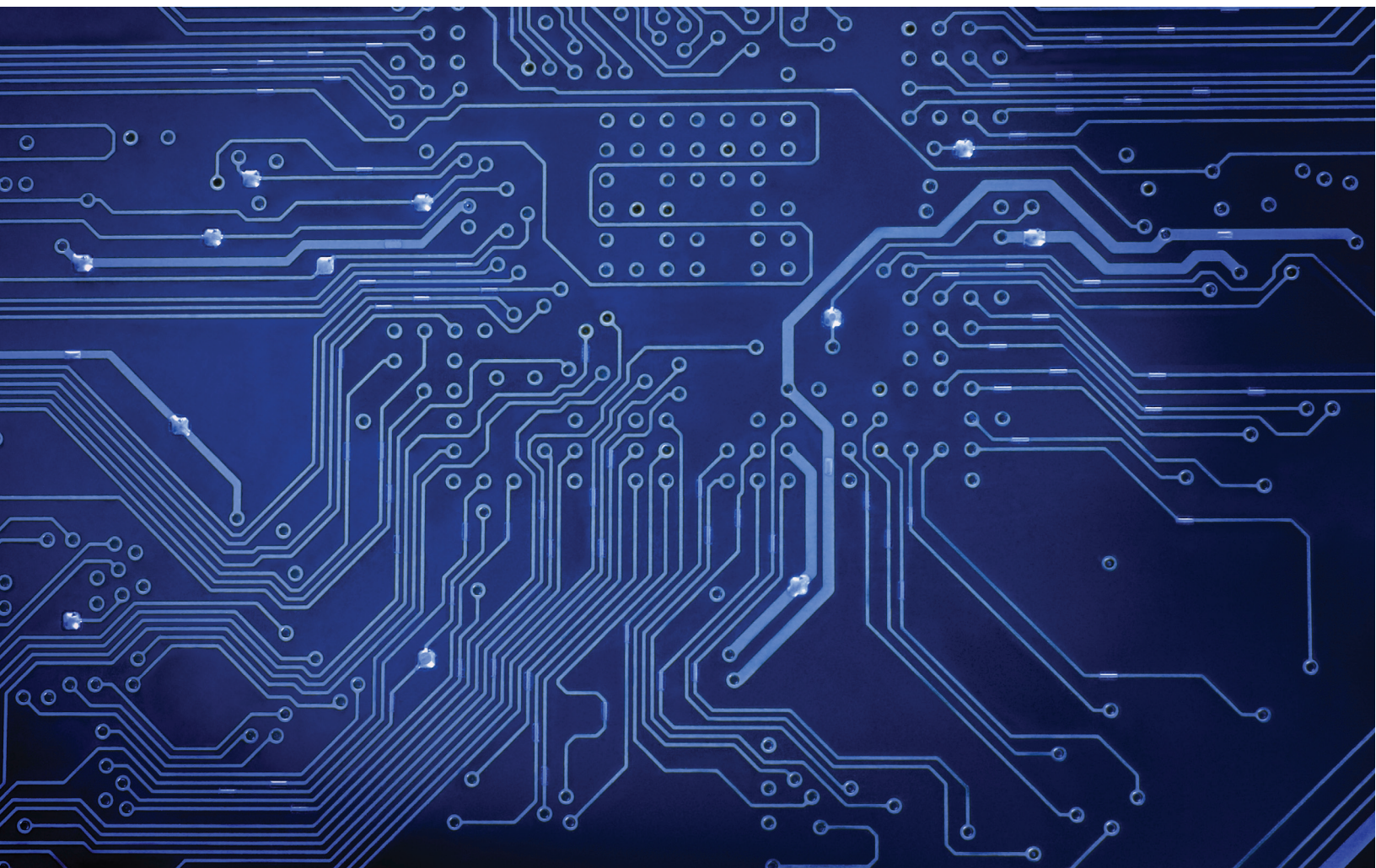
DO NOT SCALE DRAWING.
THIS DRAWING CONTAINS PROPRIETARY INFORMATION THAT IS PROPRIETARY TO IRISD AND SHOULD NOT BE USED WITHOUT WRITTEN PERMISSION.
*側面は、イリソ電子工業（株）の所有する情報を含むもので当社の許可なく複製を禁止する。

NOTE

[illegible]

DO NOT SCALE DRAWING.
THIS DRAWING CONTAINS INFORMATION THAT IS PROPRIETARY TO IRISO AND SHOULD NOT BE USED WITHOUT WRITTEN PERMISSION. 本図面は、イリソ電子工業（株）の所有する情報を含むもので当該社の許可なく複製を禁止する。

Connecting a Better Future.



IRISO USA, INC.
IRISO ELECTRONICS CO., LTD.



34405 W 12 Mile Rd. #237
Farmington Hills, MI 48331 USA



(248) 324-9780



info@irisoconnectors.com



www.iriso.co.jp/us