

9637 SERIES

FPC/FFC Type Connectors



- 0.5mm pitch SMT
- ZIF (Flip lock) Type
- Bottom contact

The 9637 series is 0.5mm-pitch SMT, right angle (bottom contact) FPC/FFC connector. It contains a locking device to keep the actuator up-right when opened. It is slim design and preventing exposure of the terminal on the base of the connector; simplify the design of the PCB layout. Over one billion pcs currently used.

Features

- ZIF (Flip lock) type with clear tactile feel for better workability.
- Line up 6 – 60 contacts, every 1 position.
- Compliant with RoHS

Specifications

| | | |
|----|-----------------------|-------------------------|
| 1 | Series No. | IMSA-9637S-**Y□□□ |
| 2 | Connection type | Right Angle(RA) |
| 3 | Contact structure | Bottom |
| 4 | No. of contacts | 6~60P |
| 5 | Feature | Flip lock Type |
| 6 | Pitch | 0.5mm |
| 7 | Height | 2.00mm |
| 8 | Voltage rating | 50V(AC,DC) |
| 9 | Current rating | 0.5A |
| 10 | D.W voltage | AC 250V (1min) |
| 11 | Insulation Resistance | 100mΩ or more |
| 12 | Contact Resistance | 30mΩ or below |
| 13 | Operating Temperature | -40~+105°C |
| 14 | Plating | Over NI Plate. Au Plate |
| 15 | FFC Thickness (mm) | 0.3mm (GND:0.5) |

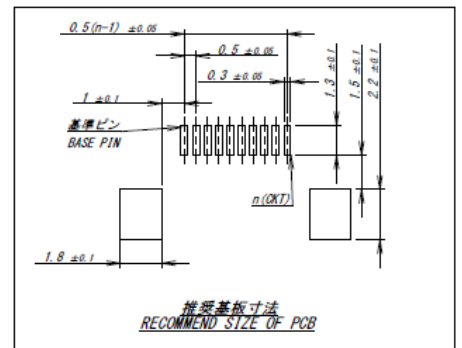
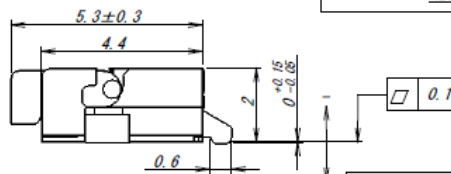
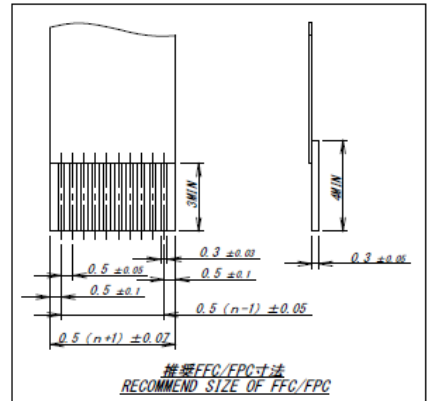
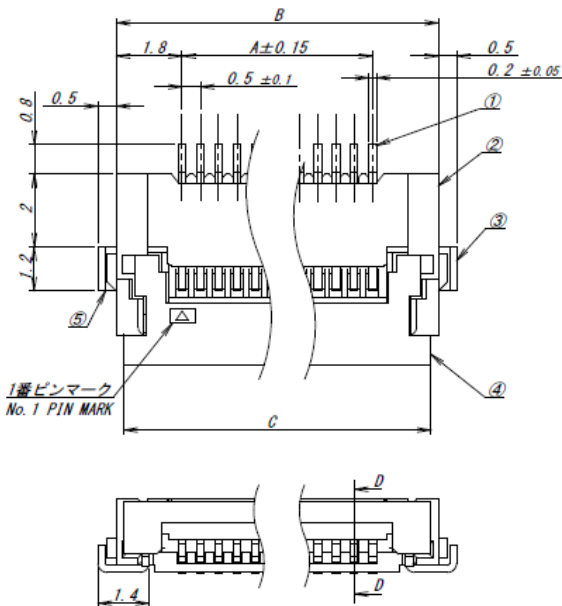
Website

http://www.iriso.co.jp/en/product_series/9637/

9637 SERIES

IMSA-9637S-**□-□□

SERIES 9637 SOCKET

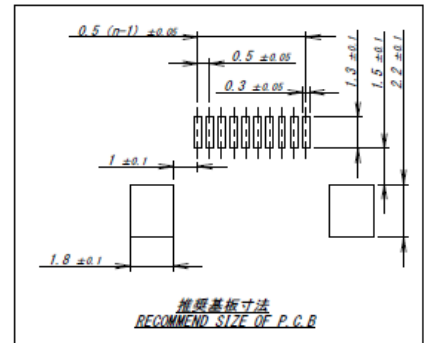
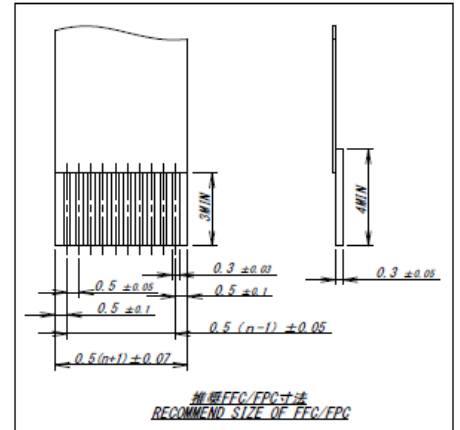
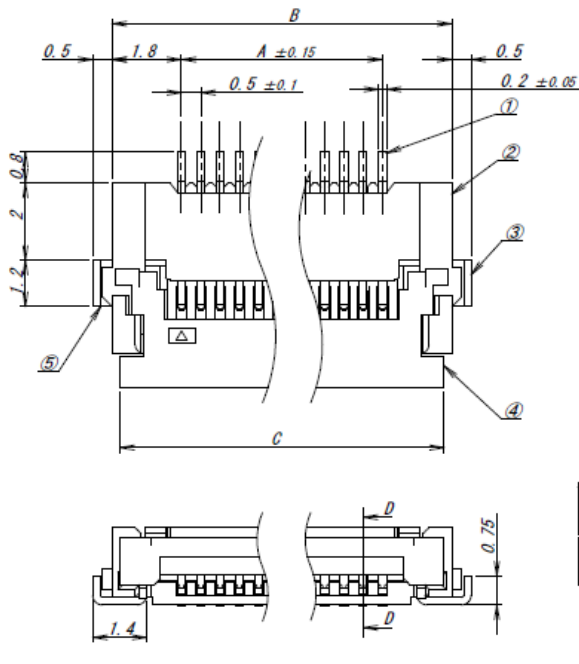


| CKT | PART No. | A | B | C |
|-----|----------------|------|------|------|
| 6 | 9637S-06A-GFN4 | 2.5 | 6.1 | 5.7 |
| 7 | 9637S-07A-GFN4 | 3.0 | 6.6 | 6.2 |
| 8 | 9637S-08A-GFN4 | 3.5 | 7.1 | 6.7 |
| 9 | 9637S-09A-GFN4 | 4.0 | 7.6 | 7.2 |
| 10 | 9637S-10A-GFN4 | 4.5 | 8.1 | 7.7 |
| 11 | 9637S-11A-GFN4 | 5.0 | 8.6 | 8.2 |
| 12 | 9637S-12A-GFN4 | 5.5 | 9.1 | 8.7 |
| 13 | 9637S-13A-GFN4 | 6.0 | 9.6 | 9.2 |
| 14 | 9637S-14A-GFN4 | 6.5 | 10.1 | 9.7 |
| 15 | 9637S-15A-GFN4 | 7.0 | 10.6 | 10.2 |
| 16 | 9637S-16A-GFN4 | 7.5 | 11.1 | 10.7 |
| 17 | 9637S-17A-GFN4 | 8.0 | 11.6 | 11.2 |
| 18 | 9637S-18A-GFN4 | 8.5 | 12.1 | 11.7 |
| 19 | 9637S-19A-GFN4 | 9.0 | 12.6 | 12.2 |
| 20 | 9637S-20A-GFN4 | 9.5 | 13.1 | 12.7 |
| 21 | 9637S-21A-GFN4 | 10.0 | 13.6 | 13.2 |
| 22 | 9637S-22A-GFN4 | 10.5 | 14.1 | 13.7 |
| 23 | 9637S-23A-GFN4 | 11.0 | 14.6 | 14.2 |
| 24 | 9637S-24A-GFN4 | 11.5 | 15.1 | 14.7 |
| 25 | 9637S-25A-GFN4 | 12.0 | 15.6 | 15.2 |
| 26 | 9637S-26A-GFN4 | 12.5 | 16.1 | 15.7 |
| 27 | 9637S-27A-GFN4 | 13.0 | 16.6 | 16.2 |
| 28 | 9637S-28A-GFN4 | 13.5 | 17.1 | 16.7 |
| 29 | 9637S-29A-GFN4 | 14.0 | 17.6 | 17.2 |
| 30 | 9637S-30A-GFN4 | 14.5 | 18.1 | 17.7 |
| 31 | 9637S-31A-GFN4 | 15.0 | 18.6 | 18.2 |
| 32 | 9637S-32A-GFN4 | 15.5 | 19.1 | 18.7 |
| 33 | 9637S-33A-GFN4 | 16.0 | 19.6 | 19.2 |
| 34 | 9637S-34A-GFN4 | 16.5 | 20.1 | 19.7 |
| 35 | 9637S-35A-GFN4 | 17.0 | 20.6 | 20.2 |
| 36 | 9637S-36A-GFN4 | 17.5 | 21.1 | 20.7 |
| 37 | 9637S-37A-GFN4 | 18.0 | 21.6 | 21.2 |
| 38 | 9637S-38A-GFN4 | 18.5 | 22.1 | 21.7 |
| 39 | 9637S-39A-GFN4 | 19.0 | 22.6 | 22.2 |

9637 SERIES

IMSA-9637S-**□-□□

SERIES 9637 SOCKET



| CKT | PART No. | A | B | C |
|-----|----------------|------|------|------|
| 40 | 9637S-40C-GFN4 | 19.5 | 23.1 | 22.7 |
| 41 | 9637S-41C-GFN4 | 20.0 | 23.6 | 23.2 |
| 42 | 9637S-42C-GFN4 | 20.5 | 24.1 | 23.7 |
| 43 | 9637S-43C-GFN4 | 21.0 | 24.6 | 24.2 |
| 44 | 9637S-44C-GFN4 | 21.5 | 25.1 | 24.7 |
| 45 | 9637S-45C-GFN4 | 22.0 | 25.6 | 25.2 |
| 46 | 9637S-46C-GFN4 | 22.5 | 26.1 | 25.7 |
| 47 | 9637S-47C-GFN4 | 23.0 | 26.6 | 26.2 |
| 48 | 9637S-48C-GFN4 | 23.5 | 27.1 | 26.7 |
| 49 | 9637S-49C-GFN4 | 24.0 | 27.6 | 27.2 |
| 50 | 9637S-50C-GFN4 | 24.5 | 28.1 | 27.7 |
| 51 | 9637S-51C-GFN4 | 25.0 | 28.6 | 28.2 |
| 52 | 9637S-52C-GFN4 | 25.5 | 29.1 | 28.7 |
| 53 | 9637S-53C-GFN4 | 26.0 | 29.6 | 29.2 |
| 54 | 9637S-54C-GFN4 | 26.5 | 30.1 | 29.7 |
| 55 | 9637S-55C-GFN4 | 27.0 | 30.6 | 30.2 |
| 56 | 9637S-56C-GFN4 | 27.5 | 31.1 | 30.7 |
| 57 | 9637S-57C-GFN4 | 28.0 | 31.6 | 31.2 |
| 58 | 9637S-58C-GFN4 | 28.5 | 32.1 | 31.7 |
| 59 | 9637S-59C-GFN4 | 29.0 | 32.6 | 32.2 |
| 60 | 9637S-60C-GFN4 | 29.5 | 33.1 | 32.7 |

IRISO U.S.A., INC.

34405 West Twelve Mile Road, Suite 237 Farmington Hills, MI 48331, U.S.A.
 TEL: 248-324-9780 FAX: 248-324-9783
<http://www.iriso.co.jp/en/>

*Specification is subject to change without prior notice for improving performance of the product and so on.
 *Dimension and specification described herein are limited to major items. When applying the products, please confirm details on drawing and specification sheets which will be provided upon request.