

The 10110B Series is a floating board to board connector (0.635mm pitch, 2 rows, ST/RA connection, plug side). To handle wide variances in plug/socket heights and mating types, this connector's mating height options are available every 0.5mm height increment and has a high speed maximum compliance of 3.0Gbps.

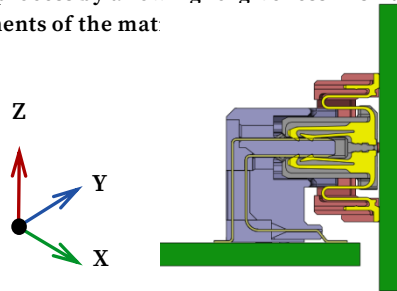
The 2-Point Contact is designed to achieve a perfect connection by preventing contact failure and conductivity failure caused by foreign materials. It operates under a wide range of temperatures which makes it ideally suited for the automotive industry. (-40 to 105°C).

#### 【Target Application】

ADAS, Infotainment, Home equipment, Industrial equipment, Telecom equipment, Robot

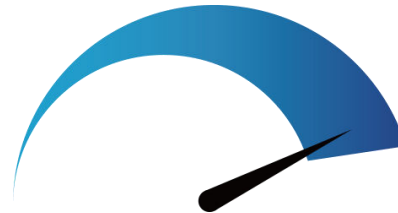
## Floating

IRISO's Board-to-Board Floating connector technology allows connectors to have a greater tolerance on misalignments, especially those with multiple connections. Another benefit of our Floating connectors is that they absorb movement which reduces stress on the board from the solder tails over time. Additionally, the tri-directional floating technology helps in the connecting assembly process by allowing forgiveness in small misalignments of the mat



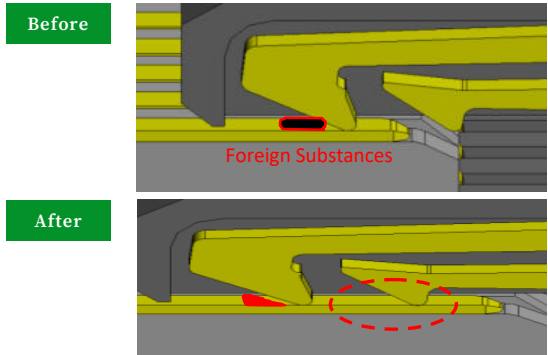
## High Speed

The demand for high-frequency component signals is omnipresent. Ever advancing technology requires modern devices to have high-speed and reliable transmission from its connected components. IRISO has met this challenge by combining our floating connectors with high-speed transmissions technology.



## 2 Point Contact (BtoB)

IRISO's "Two-Point" contact provides a reliable connection even in dust and dirt contaminated environments, by reliably removing foreign material at the front contact. For devices that require high connection reliability, our connector can be used with confidence.



IMSA-10109S-~~XXYXXX~~ / IMSA-10110B-~~XXY9XX~~

Product Spec

Item	Unit	Specification
Pitch	mm	0.635
Floating	mm	X:±0.5 Y:±0.5
Mating height	mm	10.7~18.75
Pin Counts	ckt	10110B : 30~120 10109S : 20~120
Connecting Type	-	10110B : Right Angle 10109S : Stacking
Operating Temperature Range	℃	-40~+105
Rated Current	A	0.5
Rated Voltage	V	50
Contact Resistance	mΩ	100
Withstand Voltage	V	250
Durability (Insertion/Withdrawal)	times	30

\* For packaging info, please refer to our packaging drawing.  
\* Contents are subject to change without prior notice, due to our quest for improving product performance. Dimensions and specifications described herein are limited to major items. For more details on how to use this connector, please request a drawing and specification sheet. \*Specifications may be subject to changes without prior notice, due to our quest for improving product performance.

\* 掲載している内容・仕様・数値は、概略のものであり、予告無しに変更されることがあります。  
\* ご使用の際は、最新の図面・仕様書をお取り寄せ頂き、正しくご使用下さい。ご不明な点などございましたら、弊社営業担当にご相談ください。  
\* 製品の梱包については図面をご確認ください

Plug

Parts	Material	Plating
Housing	LCP	-
Retainer	-	-
Contact	Copper alloy	Gold
Metal Flange	Copper alloy	Tin

Socket

Component	Material	Plating
Housing	LCP	-
Retainer	LCP	-
Contact	Copper alloy	Gold
Metal Flange	Copper alloy	Tin