

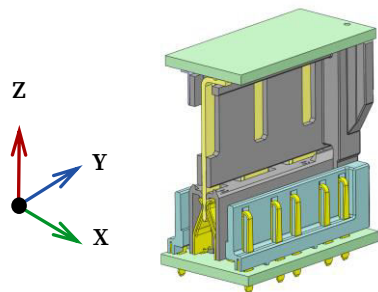
The 10122 series has high voltage rating(600V) / current rating(15A), board to board connector specified for power application. It can cover a wide range of operating temperature. High current rating and a wide range of floating function(self alignment) go well together.

## 【Target Application】

Powertrain, Industrial equipment, Motorcycle

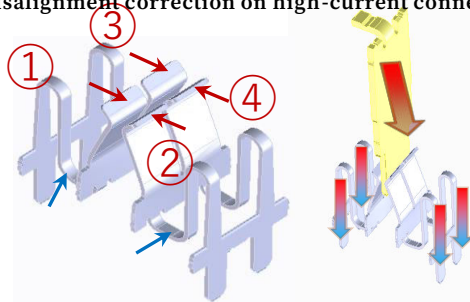
### Floating

IRISO's Board-to-Board Floating connector technology allows connectors to have a greater tolerance on misalignments, especially those with multiple connections. Another benefit of our Floating connectors is that they absorb movement which reduces stress on the board from the solder tails over time. Additionally, the tri-directional floating technology helps in the connecting assembly process by allowing forgiveness in small misalignments of the mating guides.



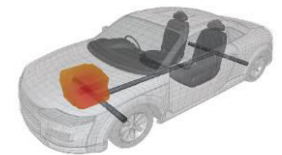
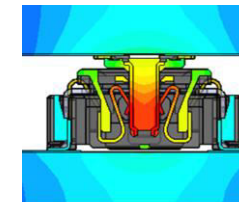
### Power Contact

Smaller devices with higher functionality requires more electric energy even in smaller spaces. IRISO's high-current connectors use materials specially designed for power supply in both contact and housing parts. Each contact has an independent four-point contact structure that achieves high contact reliability and low contact resistance. This minimizes system heat retention and achieves a high operating temperature range. Additionally, IRISO's unique floating mechanism adjusts for misalignment correction on high-current connections.



### Heat resistance

Application close to engine and high performance device requires high heat resistance connector due to temperature rise. This connector can be used under severe high temperature condition.



IMSA-10122B-XXY5XX / IMSA-10122S-XXY5XX

Product Spec

Item	Unit	Specification
Pitch	mm	11
Floating	mm	X:±1.0 Y:±0.5
Mating height	mm	30
Pin Counts	ckt	3
Connecting Type	-	Stacking
Operating Temperature Range	℃	-40～125
Rated Current	A	15
Rated Voltage	V	600
Contact Resistance	mΩ	3.5
Withstand Voltage	V	1000
Durability (Insertion/Withdrawal)	times	10

\* For packaging info, please refer to our packaging drawing.  
\* Contents are subject to change without prior notice, due to our quest for improving product performance. Dimensions and specifications described herein are limited to major items. For more details on how to use this connector, please request a drawing and specification sheet. \*Specifications may be subject to changes without prior notice, due to our quest for improving product performance.

\* 掲載している内容・仕様・数値は、概略のものであり、予告無しに変更されることがあります。  
\* ご使用の際は、最新の図面・仕様書をお取り寄せ頂き、正しくご使用下さい。ご不明な点などございましたら、弊社営業担当にご相談ください。  
\* 製品の梱包については図面をご確認ください

Plug

Parts	Material	Plating
Housing	PA9T	-
Retainer	-	-
Contact	Copper alloy	Gold,Tin
Metal Flange	Copper alloy	Tin

Socket

Component	Material	Plating
Housing	PA9T	-
Retainer	PA9T	-
Contact	Copper alloy	Gold,Tin
Metal Flange	Copper alloy	Gold,Tin