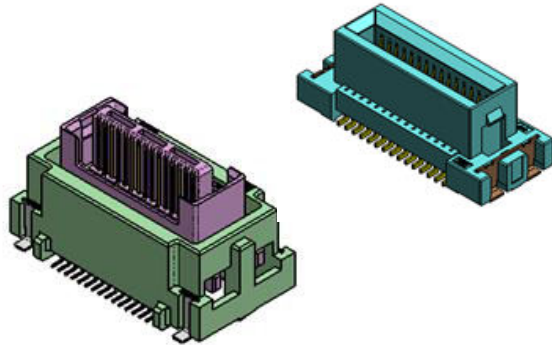


# 10128 Series - Board to Board Connector -



10128 Series is floating Board to Board connector (0.8mm pitch, 2 rows).

In addition to IRISO's unique function "Z-Move™", the contact is designed with two-point contact. It is expected and designed to be durable under severe vibrating condition.

By 0.8mm pitch, 10128 achieve space saving compared to the conventional 10120 series (about 50% reduction).

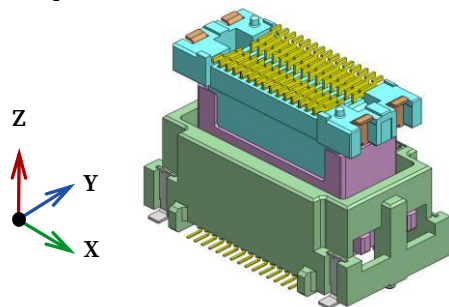
Our unique vibration simulation will propose a fixing method that is suitable for your equipment and will strongly support your design.

## 【Target Application】

ADAS, Infotainment, Home equipment, Industrial equipment, Telecom equipment, Robot

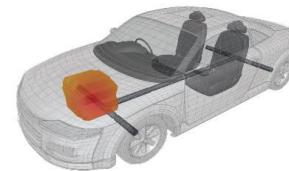
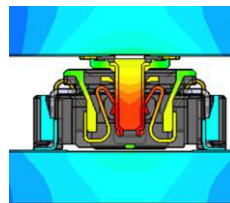
## Z-Move Vibration

IRISO's proprietary "Z-Move" technology absorbs surface vibrations because the contact follows the Z-direction, allowing high contact reliability. It also increases contact reliability over time by reducing chafing. In addition, IRISO offers a vibration simulation test service, which has extensive customer experience. We strive to partner with our customers early in the design process to get feedback to make the production process more efficient.



## High Temp

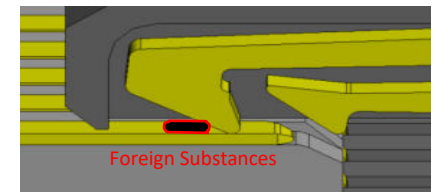
Application close to engine and high-performance device requires high heat resistance connector due to temperature rise. This connector can be used under severe high temperature condition.



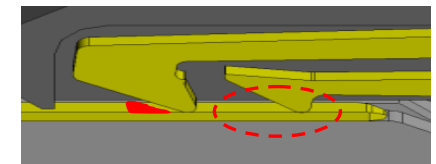
## 2 Point Contact

IRISO's "Two-Point" contact provides a reliable connection even in dust and dirt contaminated environments, by reliably removing foreign material at the front contact. For devices that require high connection reliability, our connector can be used with confidence.

Before



After



# 10128 Series - Board to Board Connector -



IMSA-10128S-**XXYXXX** / IMSA-10128B-**XXYXXX**

## Product Spec

Item	Unit	Specification
Pitch	mm	0.8
Floating	mm	X:±0.5 Y:±0.5
Mating height	mm	18
Pin Counts	ckt	30,50
Connecting Type	-	Stacking
Operating Temperature Range	℃	-40~+125
Rated Current	A	0.5
Rated Voltage	V	125
Contact Resistance	mΩ	100
Withstand Voltage	V	250
Durability (Insertion/Withdrawal)	times	30

\* For packaging info, please refer to our packaging drawing.  
\* Contents are subject to change without prior notice, due to our quest for improving product performance. Dimensions and specifications described herein are limited to major items. For more details on how to use this connector, please request a drawing and specification sheet. \*Specifications may be subject to changes without prior notice, due to our quest for improving product performance.

\* 掲載している内容・仕様・数値は、概略のものであり、予告無しに変更されることがあります。  
\* ご使用の際は、最新の図面・仕様書をお取り寄せ頂き、正しくご使用下さい。ご不明な点などございましたら、弊社営業担当にご相談ください。  
\* 製品の梱包については図面をご確認ください

## Plug

Parts	Material	Plating
Housing	PA9T	-
Retainer	PA9T	-
Contact	Copper alloy	Gold
Metal Flange	Copper alloy	Sn

## Socket

Component	Material	Plating
Housing	PA9T	-
Retainer	-	-
Contact	Copper alloy	Gold
Metal Flange	Copper alloy	Sn