

The 11008/11009 Series is a Board-to-FPC connector with a 2.2mm pitch in two rows.

Through our years of experience in product research, design and development, we've typically seen our customers having to navigate their own design with thick wires in small spaces.

Typical connectors have difficult handling these thick, numerous wires.

IRISO's 11008/11009 Series addresses this concern while mitigating wires getting tangled.

This connector is also suitable for applications with an operating temperature range of $-40^{\circ}\text{C} \sim +125^{\circ}\text{C}$, making it ideal for automotive applications.

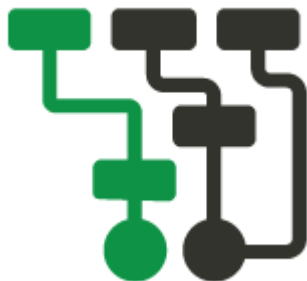
【Target Application】

Powertrain(Motor cycle), Consumer

Industrial office equipment broadcasting equipment, Industrial equipment communication equipment Robot

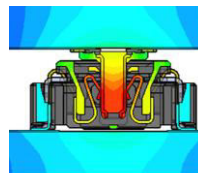
Wire Management

In our experience, customers usually use thick wires in limited spaces and have difficulty handling many of these wires at once. IRISO's Board-to-FPC connectors addresses this concern which helps avoid tangled wires in addition to making it easier to handle multiple wires with wire management.



Large operating Temperature Range

The 11008/11009 Series has the ability to perform in harsh temperature environments ranging from $-40^{\circ}\text{C} \sim +125^{\circ}\text{C}$. With this large temperature range, the connector series meets automotive requirements.



Additional Uncommon Features

This series offers a robust set of features uncommon to typical FFC/FPC solutions.

With a locking feature at both ends of the connector, it becomes completely detachable that can be mated/unmated 20 times.

Additionally, it has a high retention force and contact reliability you can depend on.



IMSA-11008S-XXXYYY / IMSA-11008B-XXXYYY / IMSA-11009B-XXXYYY

Product Spec

Item	Unit	Specification
Pitch	mm	2.2
Pin Counts	ckt	10~40
Connecting Type	-	11008 : Stacking / 11009 : Right Angle
Operating Temperature Range	℃	-40~+125
Rated Current	A	1.0A/pin
Rated Voltage	V	125V(JIS C60664-1 Pollution DegreeII)
Contact Resistance	mΩ	50mΩ Max
Withstand Voltage	V	AC 250V
Durability (Insertion/Withdrawal)	times	20 Max

Plug

Parts	Material	Plating
Base	PA9T	-
Contact	Copper alloy	Gold
Metal Flange	Copper alloy	Tin

Socket

Component	Material	Plating
Housing	LCP	-
Contact	Corson alloy	Gold
Metal Flange	Stainless Steel	Tin

* For packaging info, please refer to our packaging drawing.
* Contents are subject to change without prior notice, due to our quest for improving product performance. Dimensions and specifications described herein are limited to major items. For more details on how to use this connector, please request a drawing and specification sheet. *Specifications may be subject to changes without prior notice, due to our quest for improving product performance.

* 掲載している内容・仕様・数値は、概略のものであり、予告無しに変更されることがあります。
* ご使用の際は、最新の図面・仕様書をお取り寄せ頂き、正しくご使用下さい。ご不明な点などございましたら、弊社営業担当にご相談ください。
* 製品の梱包については図面をご確認ください