

2.0mm pitch non-waterproof Automotive grade interface connector(Header) 050 terminal (Tab size 0.5mmx0.3mm) downsized and low height connector. Operating temperature range us up to +125°C. 1 row/SMT/Right angle version.

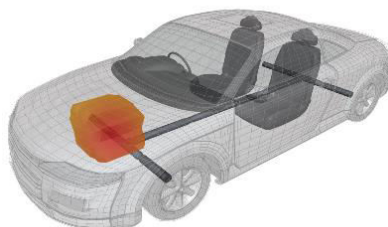
## 【Target Application】

ADAS, Infotainment, Powertrain

## High heat resistance

### Under high temperature environment

Application close to engine and high performance device requires high heat resistance connector due to temperature rise. This connector can be used under severe high temperature condition.



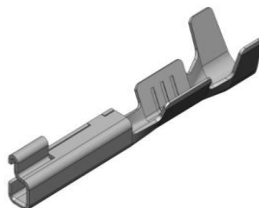
## Space saving

### Downsized with "050" terminal and 1 row structure

"0.5mm terminal" is adopted instead of the conventional "0.64mm terminal". 13103 is downsized approximately 50% compared to 9491B(0.64mm terminals / 2.2mm pitch).

(20pin, volume of mounting connector)

In addition, 13103 is 1 row version with same concept as 13065 2 row. 13103's height is 6.50mm(13065's height is 9.3mm), which is extremely low for this application.



## Wide variety

### Pin count variation

13103 has wide pin counts line-up as 1 row type, and respond to the various needs. (20 pin for Max)

極数 POS	梱包品番 PACKING No.	製品品番 PARTS No.	梱包数量 Qty
2	13103S-02Y50*	13103S-02*-NP	253 (23×11)
4	13103S-04Y50*	13103S-04*-NP	187 (17×11)
8	13103S-08Y50*	13103S-08*-NP	121 (11×11)
10	13103S-10Y50*	13103S-10*-NP	99 (9×11)
12	13103S-12Y50*	13103S-12*-NP	88 (8×11)
16	13103S-16Y50*	13103S-16*-NP	66 (6×11)
20	13103S-20Y50*	13103S-20*-NP	55 (5×11)

IMSA-13103B-X-XXY9XX

IMSA-13103S-X-XXY9XX

Product Spec

Item	Unit	Specification
Pitch	mm	2.0
Pin Counts	ckt	2, 4, 8, 10, 12, 16, 20
Connecting Type	-	Right Angle
Operating Temperature Range	°C	-40～+125
Rated Current	A	3.0
Rated Voltage	V	50
Withstand Voltage	V	500
Durability (Insertion/Withdrawal)	times	20

IPS-13065T-01A-T

Component	Material	Plating
Receptacle contact	Copper alloy	Tin

\* For packaging info, please refer to our packaging drawing.  
\* Contents are subject to change without prior notice, due to our quest for improving product performance. Dimensions and specifications described herein are limited to major items. For more details on how to use this connector, please request a drawing and specification sheet. \*Specifications may be subject to changes without prior notice, due to our quest for improving product performance.

\* 掲載している内容・仕様・数値は、概略のものであり、予告無しに変更されることがあります。  
\* ご使用の際は、最新の図面・仕様書をお取り寄せ頂き、正しくご使用下さい。ご不明な点などございましたら、弊社営業担当にご相談ください。  
\* 製品の梱包については図面をご確認ください

Plug

Parts	Material	Plating
Housing	pps	-
Contact	Copper alloy	Tin
Metal Flange	Brass	Tin

Socket

Component	Material	Plating
Housing	PBT	-
Retainer	PBT	-