

IRISO's 9880 Series is a 9.2mm pitch board to board connector rated for high voltage (300V), high current (25A), and can withstand harsh temperatures from -40°C ~ +125°C.

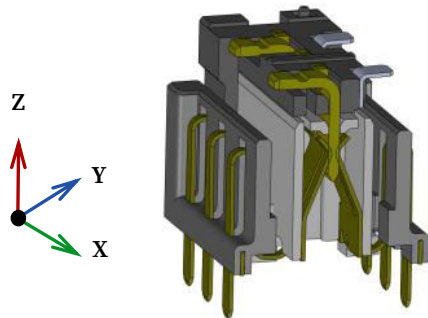
These factors, combined with the connector's floating capability, makes it ideal for a variety of industrial and automotive applications that require a robust solution to withstand its environment.

## 【Target Application】

Powertrain, Industrial equipment, Motorcycle

### Floating

With a floating range of  $X \pm 1.0\text{mm}$ ,  $Y \pm 0.5\text{mm}$ , and  $Z \pm 0.5\text{mm}$ , this function mitigates the stress on the soldering joint while in the assembly process reducing product waste while saving our customers money.



### High Current

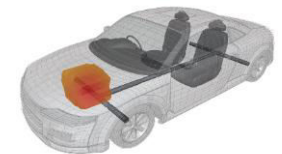
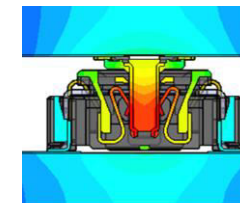
This series is able to handle up to 300 volts and 25 amps of current.

Our customers have successfully used this connector for DC-DC converters in hybrid vehicles.

### Heat Resistance

The 9880 Series is able to withstand temperatures from -40°C ~ +125°C.

This makes it ideal for harsh environment such as in the automotive and industrial industries.



IMSA-9880B-~~XXYXXX~~ / IMSA-9880S-~~XXYXXX~~

Product Spec

Item	Unit	Specification
Pitch	mm	9.2
Floating	mm	X:±1.0 Y:±0.5
Mating height	mm	14.80
Pin Counts	ckt	2
Connecting Type	-	Stacking
Operating Temperature Range	℃	-40～125
Rated Current	A	15
Rated Voltage	V	300
Contact Resistance	mΩ	3.5
Withstand Voltage	V	500
Durability (Insertion/Withdrawal)	times	10

\* For packaging info, please refer to our packaging drawing.  
\* Contents are subject to change without prior notice, due to our quest for improving product performance. Dimensions and specifications described herein are limited to major items. For more details on how to use this connector, please request a drawing and specification sheet. \*Specifications may be subject to changes without prior notice, due to our quest for improving product performance.

\* 掲載している内容・仕様・数値は、概略のものであり、予告無しに変更されることがあります。  
\* ご使用の際は、最新の図面・仕様書をお取り寄せ頂き、正しくご使用下さい。ご不明な点などございましたら、弊社営業担当にご相談ください。  
\* 製品の梱包については図面をご確認ください

Plug

Parts	Material	Plating
Housing	PA9T	-
Retainer	-	-
Contact	Copper alloy	Ni, Tin
Metal Flange	Copper alloy	Ni, Tin

Socket

Component	Material	Plating
Housing	PA9T	-
Retainer	PA9T	-
Contact	Copper alloy	Ni Tin matte
Metal Flange	-	-