



This is a 0.5mm pitch, Board to Board, SMT type connector with a two-point contact mechanism reliability.

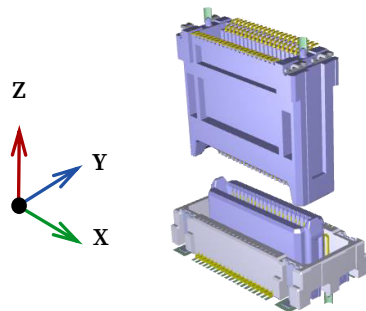
In case of Iriso's 2-point Contact Connector, the first contact would remove foreign materials (contamination) for better contact reliability. Even if the first contact were on foreign material, the second contact would still be securely touching the contact surface (and vice versa).

【Target Application】

Automotive equipment, Industrial equipment, Commercial equipment

Floating

With a floating range of $X \pm 0.5\text{mm}$, $Y \pm 0.5\text{mm}$, and $Z \pm 0.5\text{mm}$, this function mitigates the stress on the soldering joint while in the assembly process reducing product waste while saving our customers money.



Robot Automation

IRISO Connectors for Factory Automation and Robotics Automated assembly not only cuts labor costs, but it increases quality. Certain automation, however, can have adverse effects like adhesion of foreign matter, mounting/mating misalignments, and incomplete mating. To overcome these issues, IRISO has launched the "Robot Assembly Compatible Connector" concept to solve these automated assembly problems.



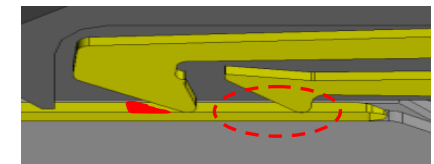
2 Point Contact

IRISO's "Two-Point" contact provides a reliable connection even in dust and dirt contaminated environments, by reliably removing foreign material at the front contact. For devices that require high connection reliability, our connector can be used with confidence.

Before



After



IMSA-998*S-XXXXY9XX / IMSA-998*B-XXXXY9XX

Product Spec

Item	Unit	Specification
Pitch	mm	0.5
Floating	mm	X:±0.5 Y:±0.5
Mating height	mm	8~14
Pin Counts	ckt	40~140
Connecting Type	-	Stacking / Right Angle
Operating Temperature Range	℃	-40~+105
Rated Current	A	0.4
Rated Voltage	V	50
Contact Resistance	mΩ	100
Withstand Voltage	V	250
Durability (Insertion/Withdrawal)	times	30

* For packaging info, please refer to our packaging drawing.
* Contents are subject to change without prior notice, due to our quest for improving product performance. Dimensions and specifications described herein are limited to major items. For more details on how to use this connector, please request a drawing and specification sheet. *Specifications may be subject to changes without prior notice, due to our quest for improving product performance.

* 掲載している内容・仕様・数値は、概略のものであり、予告無しに変更されることがあります。
* ご使用の際は、最新の図面・仕様書をお取り寄せ頂き、正しくご使用下さい。ご不明な点などございましたら、弊社営業担当にご相談ください。
* 製品の梱包については図面をご確認ください

Plug

Parts	Material	Plating
Housing	46Nylon	-
Contact	Phosphor bronze	Gold
Metal Flange	Brass	Tin

Socket

Component	Material	Plating
Housing	LCP	-
Contact	Copper Alloy	Gold
Metal Flange	Brass	Tin