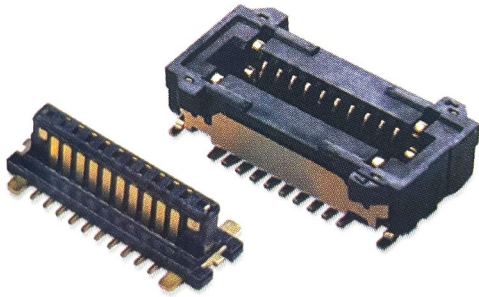


PRODUCT INFO



The 11010 Series is a high-performance, low-profile board-to-board solution engineered for space-constrained applications requiring superior signal integrity. Featuring a 0.4 mm pitch and a compact 2.0 mm mating height, this dual-row connector integrates an advanced electrostatic shield to maximize noise immunity and ensure reliable data transmission in EMI-sensitive environments

[Target applications]
ADAS, Infotainment, Consumer Products, Robots, Cameras, medical devices, measuring & inspection, flowmeters / pressure gauges, telecommunications.

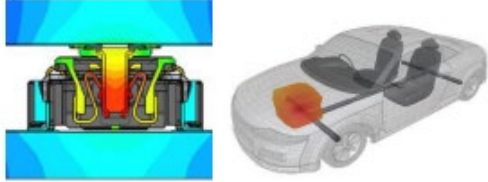
Feature 1 : High-Speed Signal Integrity

Optimized for high-speed data rates up to 6 Gbps, the 11010 Series features a precision-engineered contact structure that minimizes insertion loss and maintains tight impedance control. This design ensures stable signal integrity and reduces jitter, making it ideal for high-bandwidth applications requiring uncompromising accuracy



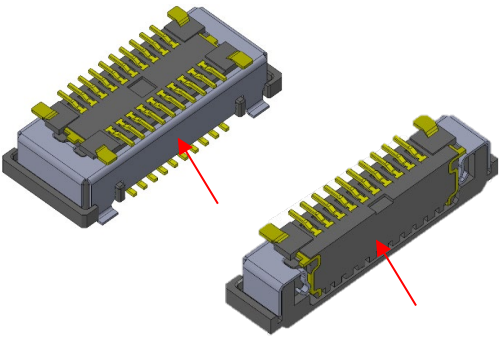
Feature 2 : High-Temperature Stability

Designed to maintain peak electrical performance in harsh thermal environments, the 11010 Series is rated for continuous operation up to 125°C. Utilizing high-grade, heat-resistant materials, the series ensures long-term contact reliability and structural integrity, making it a dependable solution for under-the-hood automotive systems and demanding industrial controls



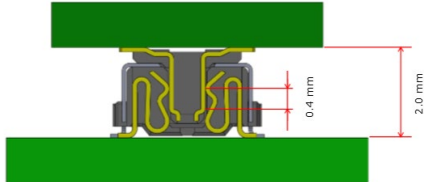
Feature 3 : Integrated Electrostatic Shielding

The 11010 Series is equipped with a comprehensive metal shield designed to maximize signal integrity. By providing a dedicated ground path and a Faraday cage effect, this structure effectively suppresses electromagnetic interference (EMI) and prevents capacitive coupling, ensuring clean data transmission even in noise-dense environments



Feature 4 : Space-Optimized Low Profile

Optimized for minimal stack height, the 11010 Series reduces overall component volume to facilitate thin-profile designs. Its low-profile 0.4 mm pitch architecture is purpose-built for dense mounting environments, providing a stable, space-saving interface for sophisticated electronic assemblies.



IMSA-11010S-**Y9** / IMSA-11010B-**Y9**

Product Spec			
Item	Unit	Specification	Note
Pitch	mm	2.0	-
Pin Counts	-	20-60	-
Mating Height	mm	2.0	-
Operating Temperature Range	°C	-40~+125°C	-
Rated Current	A	0.4	-
Voltage Rating	V	50	-
Transmission Rate	Gbps	6.0	
Dielectric Withstanding Voltage	V	100	
Insulation Resistance	mΩ	500	-
Contact Resistance	mΩ	50	
Between Boards	mm	2.0	-

*Specification is subject to change without prior notice for improving performance of the product and so on.
Dimension and specification described herein are limited to major items. When applying the products, please confirm details on drawing and specification sheets which will be provided upon request

WP_11010_R1

